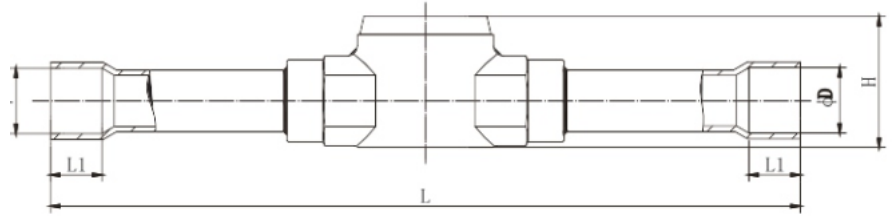


LFSG

Sight Glass

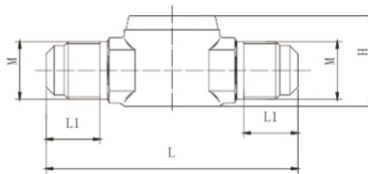
LEFOO



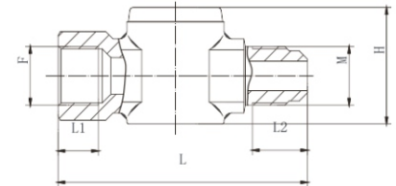
Soldering type sight glass

Model	L	L1	D	H
LFSG-1/4ODF	102	7	6.5	21.5
LFSG-3/8ODF	119	8	10.1	22.5
LFSG-1/2ODF	146	10	12.8	26.5
LFSG-5/8ODF	152	14	16.1	29.5

Model	L	L1	D	H
LFSG-3/4ODF	167	16	19.2	35
LFSG-7/8ODF	173	17	22.2	39
LFSG-1-1/8ODF	216	20	28.7	44.5



Flare type sight glass



M/F type sight glass

Both Model LFSG sight glass is used on the liquid piping of the refrigeration and air conditioning unit to indicate the flow condition of the refrigerant, water cut of the refrigerant and lubricant oil flow condition of the oil return piping on the oil separator. Model LFSG sight glass and is equipped with one moisture indicator; which will change color to indicate the water cut in the refrigerant. Model LFSG sight glass is used to indicate the level of the refrigerant in the liquid drum and the lubricant oil level in the compressor crankcase. The modified PTFE sealing is used in both Model LFSG sight glass and Model LFSG sight glass, which is applicable to various refrigerants and oils with perfect sealing performance. The structure of both Model LFSG sight glass and Model LFSG sight glass is an explosion-proof press fit and the viewing glass is clear and safety.

Model	L	L1	D	H
LFSG-1/4 SAE	64	13	21.5	7/16-20UNF
LFSG-3/8 SAE	70	15	25	5/8-18UNF
LFSG-1/2 SAE	75	16	26.5	3/4-16UNF
LFSG-5/8 SAE	80	18	29.5	7/8-14UNF
LFSG-3/4 SAE	90	20.5	35	1-1/16-14UNF

Model	L	L1	L2	H	Thread F/M
LFSG-1/4-MF	60	8.5	12	25	7/16-20UNF
LFSG-3/8-MF	68	11	15	31.5	5/8-18UNF
LFSG-1/2-MF	70	11.5	16	34.5	3/4-16UNF
LFSG-5/8-MF	78	13	18	38	7/8-14UNF

Model Selection

Model of Welded Connection	Size	Model of Threaded Connection	Size
LFSG-1/4 ODF	1/4(φ6)	LFSG-1/4 SAE	1/4 SAE
LFSG-3/8 ODF	3/8(φ10)	LFSG-3/8 SAE	3/8 SAE
LFSG-1/2 ODF	1/2(φ12)	LFSG-1/2 SAE	1/2 SAE
LFSG-5/8 ODF	5/8(φ16)	LFSG-5/8 SAE	5/8 SAE
LFSG-3/4 ODF	3/4(φ19)	LFSG-3/4 SAE	3/4 SAE
LFSG-7/8 ODF	7/8(φ22)	LFSG-3/4NPT	3/4NPT
LFSG-1 ¹ / ₈ ODF	1 ¹ / ₈ (φ28)	LFSG-G3/4	G3/4

Technical Parameters

General	Value
Applicable Refrigerant	HCFC or HFC
Applicable Medium Temperature	-40~+80°C
MAX.Working Pressure	4.5MPa
MAX. Compression Pressure	6.8MPa
Yearly Leakage of Refrigerant	≤2g R22/a